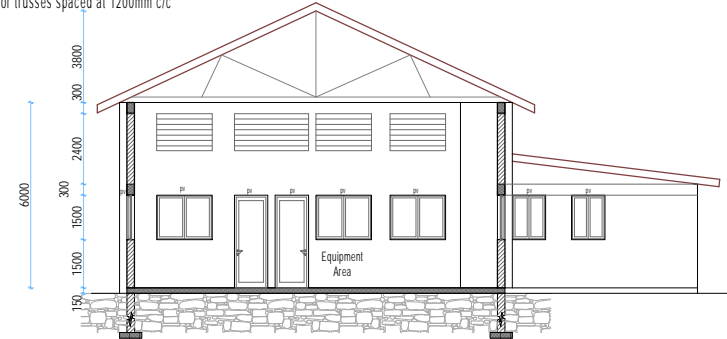


ROOFING SPECIFICATIONS

28 gauge G.I (IT5 Box Profile sheets at 30°) as MRM or equal approved
 200x4mm thick Z Purlins at 1000mm C/C
 200x25mm fascia board
 Mild steel scissor trusses spaced at 1200mm c/c

WALLING SPECIFICATIONS

All walls to be 200mm thick quarry stone; all internal walls to be plastered and painted 3 coats approved prime grade paint; the ring beams to be 200x300mm deep;



FOOTING SPECIFICATIONS

40mm thick c/s screed to 100mm thick mass concrete floor slab semi-reinforced with A142 BRC mesh on 1000 gauge polythene damp proof membrane (d.p.m) on 50mm thick well compacted murrum/quarry dust binding on 450mm thick (min) well rammed approved hardcore; 200mm thick (min) natural quarry stone substructure walling on 600mm wide x 200mm thick RC strip footing foundation, (actual depth to be determined on site)

